



## SI-AT-22 (02) Supported consumables, parameter v85 (fractional)

For a detailed list of supported items, check the operating instructions of relevant consumables.

	AT qualified
	AT qualification not yet available
	Version / Size not existing in portfolio

### KB1 | Expansion Anchor



Legend:	
4	SIW 4AT-22 & SI-AT-22
6	SIW 6AT-22 & SI-AT-22

	1/4"	3/8"	1/2"	5/8"	3/4"	1"
KB1		4	4 & 6	4 & 6	6	

### KB3 | Expansion Anchor



Legend:	
4	SIW 4AT-22 & SI-AT-22
6	SIW 6AT-22 & SI-AT-22

	1/4"	3/8"	1/2"	5/8"	3/4"	1"
KB3 HDG						
KB3 SS 304		4	4	4		
KB3 SS 316		4	4	4		

### KB T22 | Expansion Anchor



Legend:	
4	SIW 4AT-22 & SI-AT-22
6	SIW 6AT-22 & SI-AT-22

	1/4"	3/8"	1/2"	5/8"	3/4"	1"
KB-T22		4	4 & 6	4 & 6	6	
KB-T22 SS 304		4	4 & 6	4 & 6	6	
KB-T22 SS 316		4	4 & 6	4 & 6	6	

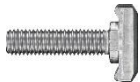
**HSL4 | Expansion Anchor**



Legend:	
4	SIW 4AT-22 & SI-AT-22
6	SIW 6AT-22 & SI-AT-22

	M8	M10	M12	M16	M20	M24
HSL4	4	4 & 6	4 & 6	4 & 6	6	6
HSL4-G	4	4 & 6	4 & 6	4 & 6	6	6

**HBC | T-Bolts**



Legend:	
4	SIW 4AT-22 & SI-AT-22
6	SIW 6AT-22 & SI-AT-22

	M8	M10	M12	M16	M20	M24
HBC 40/22			4	4		
HBC-N 40/22						
HBC 50/30			4	4	4	
HBC-N 50/30						
HBC-B		4	4			
HBC-T			4 & 6	4 & 6	6	
HBC-C		4	4 & 6	4 & 6	4 & 6	
HBC-C-E			4 & 6	4 & 6		
HBC-C-N			4			

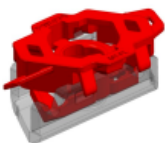
**MT-TL | Twist-Lock channel nut**



Legend:	
4	SIW 4AT-22 & SI-AT-22
6	SIW 6AT-22 & SI-AT-22

	M8	M10	M12	M16	M20	M24
MT-TL		4 & 6				
MT-TL OC		4 & 6				

**MT-FL | Fast-Lock channel nut**



Legend:	
4	SIW 4AT-22 & SI-AT-22
6	SIW 6AT-22 & SI-AT-22

	M8	M10	M12	M16	M20	M24
MT-FL		4 & 6				
MT-FL OC		4 & 6				

**MT-TFB OC | Thread forming bolt**



Legend:	
4	SIW 4AT-22 & SI-AT-22
6	SIW 6AT-22 & SI-AT-22

	M8	M10	M12	M16	M20	M24
MT-TFB OC		4 & 6				

**MT-THB OC | T-Head Bolt**



Legend:	
4	SIW 4AT-22 & SI-AT-22
6	SIW 6AT-22 & SI-AT-22

	M8	M10	M12	M16	M20	M24
MT-THB OC			4 & 6			