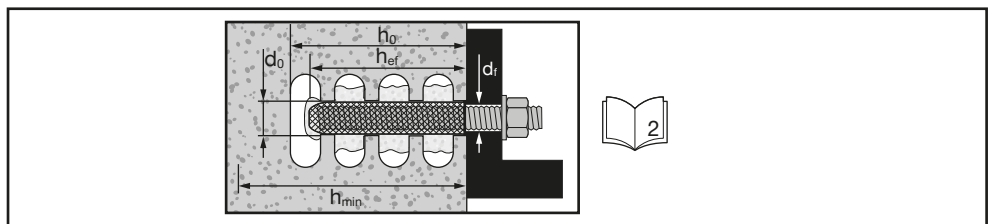
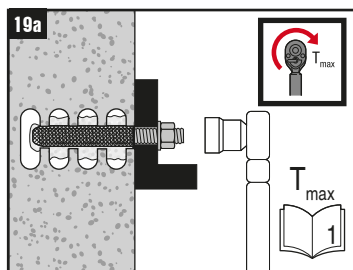
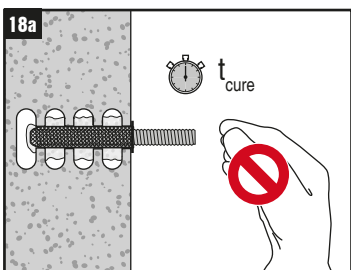
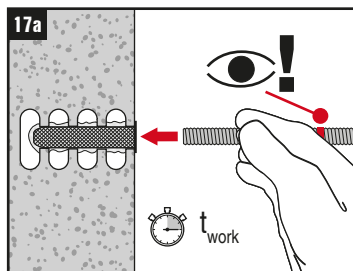
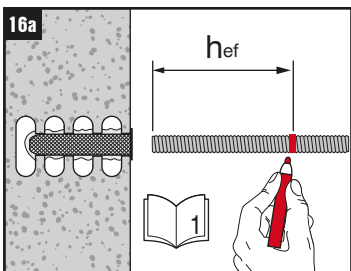
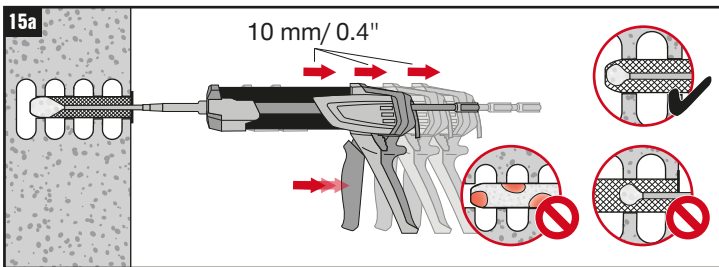
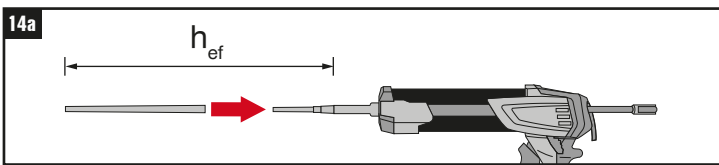
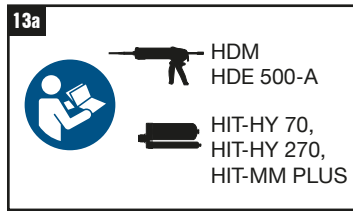
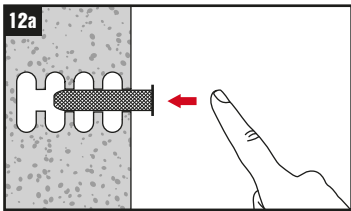
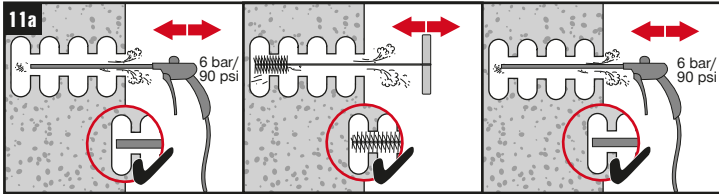
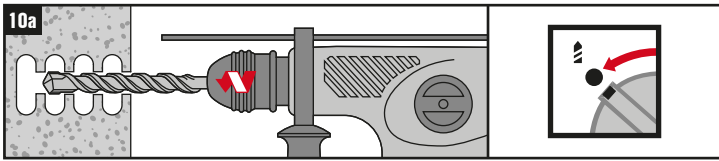


	Global (© USA, Canada)		USA, Canada
	HIT-HY 70, HIT-HY 270, HIT-MM PLUS		HIT-HY 70
	HAS HIT-V HIT-C		HAS-E HAS-R Rebar



d	d ₀		h ₀	h _{ef} min-max	h _{min}	HIT-RB	d _f	T _{max}	T _{max}		
								[Nm]	[ft lb]	[Nm]	[ft lb]
12	12 / 1/2"	M6 / 1/4"	h _{ef} +10mm h _{ef} +0.4"	170...535 mm 6 3/4" - 21"	h _{ef} + 30mm h _{ef} + 1.2"	12 / 1/2"	7 / 9/32"	≤3	≤2.2	≤10	≤7
16	16 / 5/8"	M8 / 5/16" M10 / 3/8"				16 / 5/8"	9 / 3/8" 12 / 7/16"	≤3 ≤4	≤2.2 ≤3	≤10 ≤13	≤7 ≤10
22	22 / 7/8"	M12 / 1/2"			h _{ef} + 2 d ₀	22 / 7/8"	14 / 11/16"	≤6	≤4.5	≤41	≤30

A Global
(USA, Canada)



B USA
Canada

